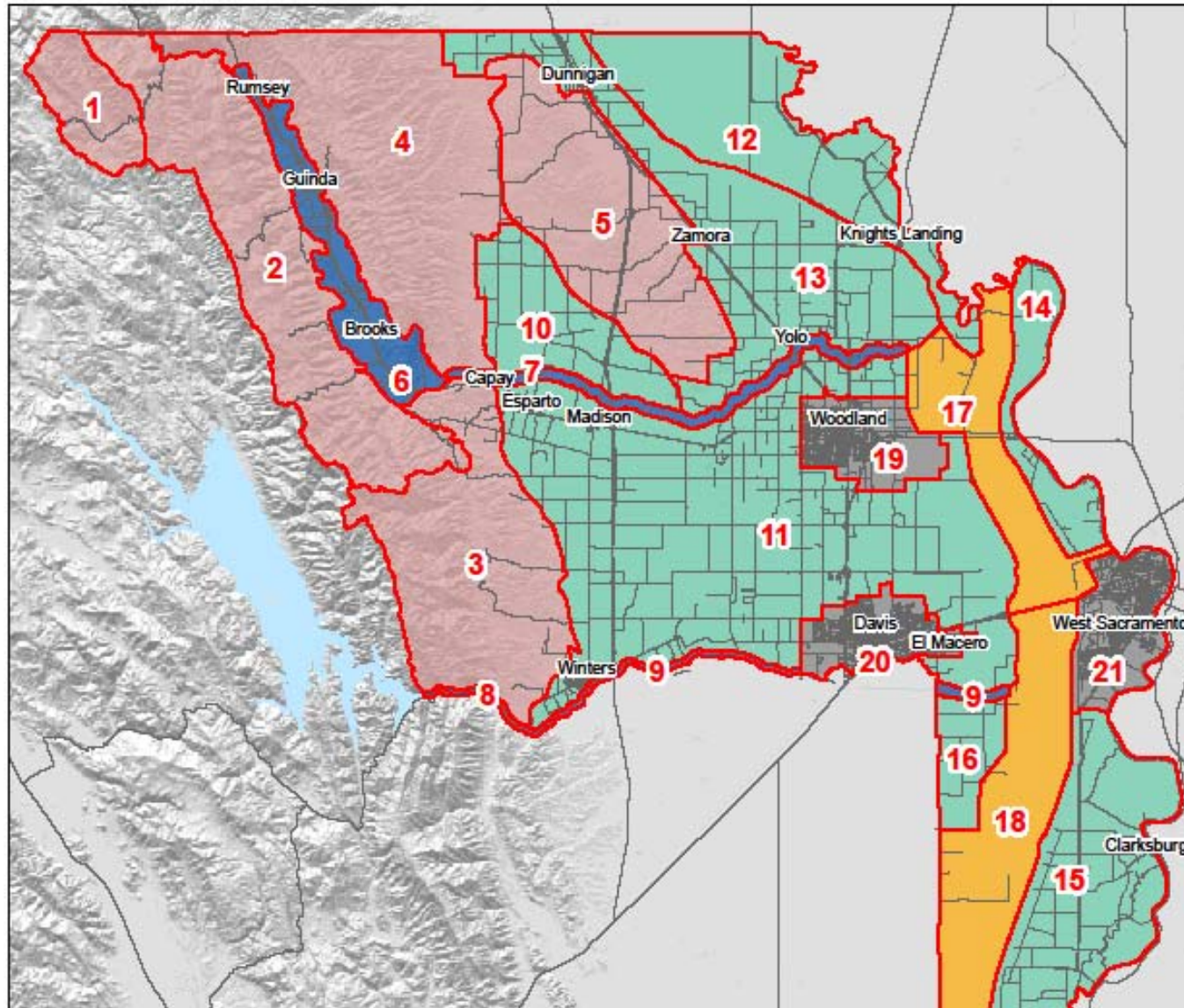


Upland Landscape Unit Conservation Strategy

- History to date
- New revisions to strategy
- Attainment of Species Goals
- Remaining Issues
- Communications

Proposal under consideration, not approved
by JPA,SAC or Board of Directors

Planning Units



- Legend**
- Conservation Planning Unit
 - 1 Little Blue Ridge
 - 2 North Blue Ridge
 - 3 South Blue Ridge
 - 4 Capay Hills
 - 5 Dunnigan Hills
 - 6 Upper Cache Creek
 - 7 Lower Cache Creek
 - 8 Upper Push Creek
 - 9 Lower Push Creek
 - 10 Hungry Hollow Basin
 - 11 Willow Slough Basin
 - 12 Colusa Basin
 - 13 Colusa Basin Plains
 - 14 North Yolo Basin
 - 15 South Yolo Basin
 - 16 Yolo Basin Plains
 - 17 North Yolo Bypass
 - 18 South Yolo Bypass
 - 19 Woodland
 - 20 Davis
 - 21 West Sacramento

- Basemap Legend**
- Major Roads
 - Roads
 - Lake Berryessa

Planning Footnote:
 The data and/or analytical results in this map represent a static view of a dynamic landscape. These data are used here for regional planning purposes only and should be updated for future and local scale decisions.

Privileged and Confidential

Draft



Miles

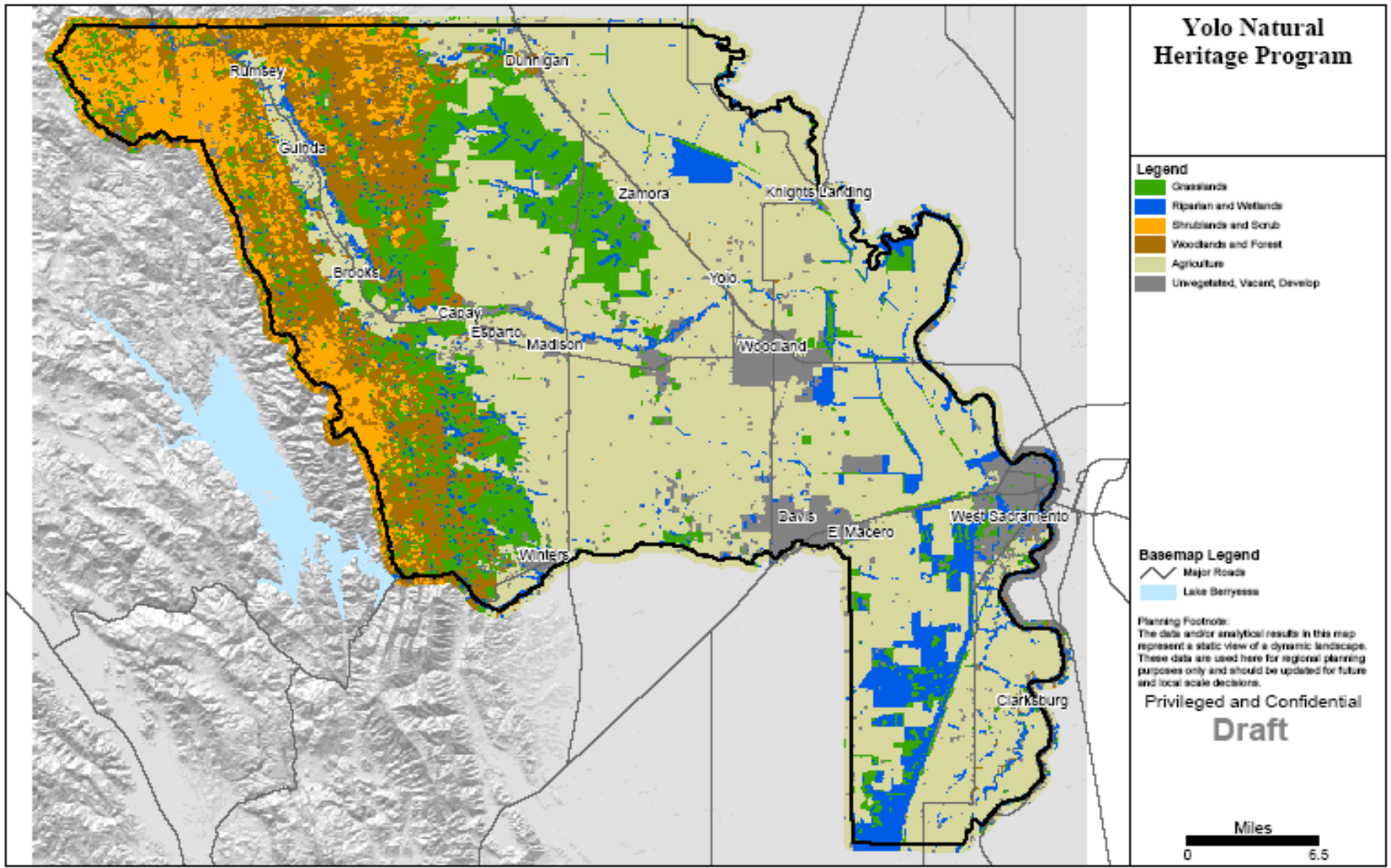
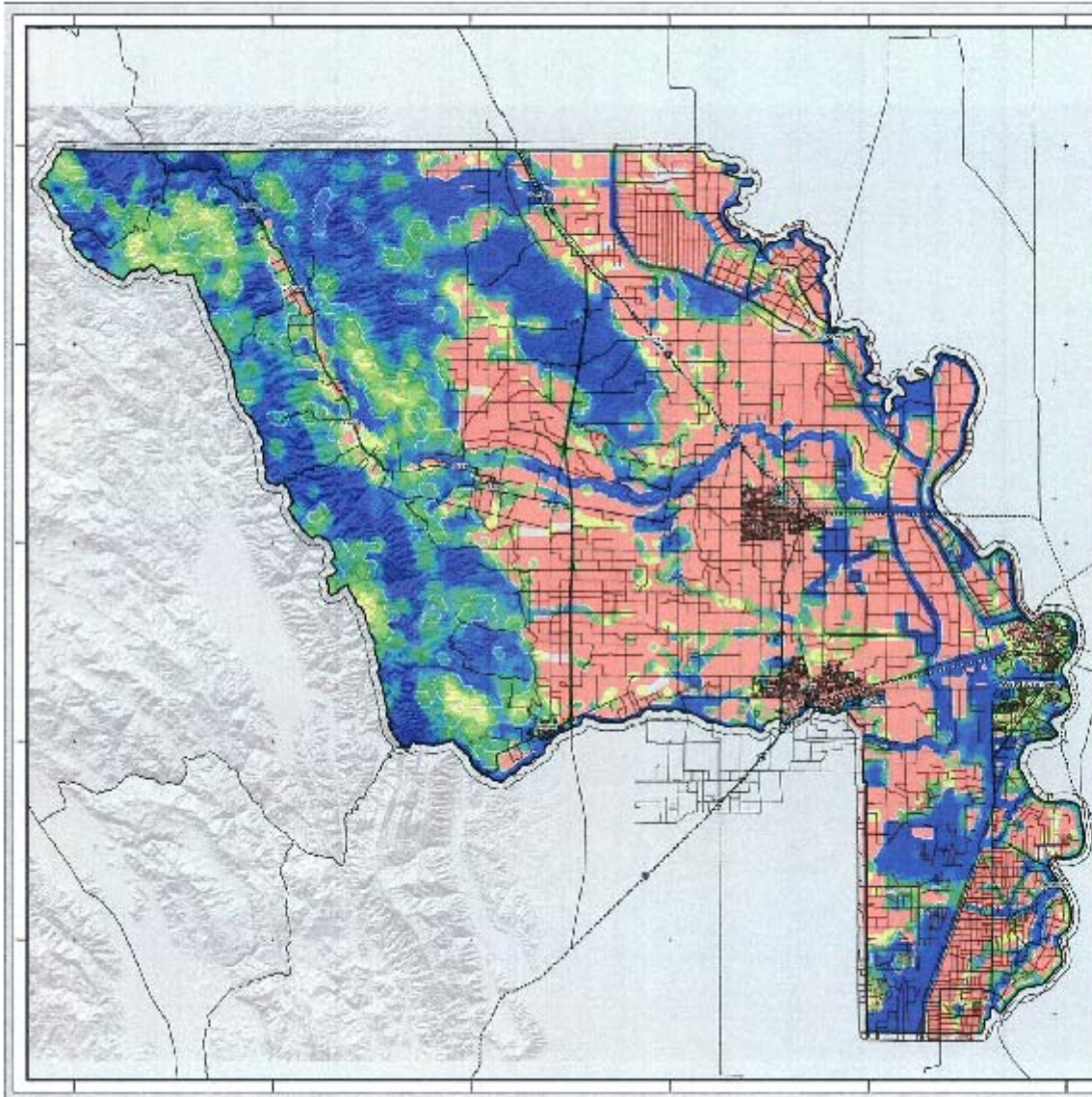


Figure 2-3. Distribution of Natural Communities in the Yolo Natural Heritage Plan Area

Upland Strategy

Process and Recent Accomplishments

- Developed draft Conservation Lands assembly rules
- Designed 3 draft Alternatives using rules and Marxam
 - Alts include different levels of lands conservation for Mountain and Hill Planning Units
 - Preservation goal for each planning unit will not exceed 80% of remaining unprotected lands in each habitat type
 - 80% maximum will maintain:
 - voluntary landowner participation
 - flexibility in lands acquisition



Preserve Design and Conservation Strategy

Marxan "D" Results



YOLO NATURAL HERITAGE PROGRAM

Legend

Exclude Farmland Units (Agriculture and Development that is more than 1,000 feet from natural habitat)

Marxan D-1 Summed Runs

- 1 - 4
- 5 - 6
- 7 - 11
- 12 - 13
- 14 - 15
- 17 - 19
- 20 - 21
- 22 - 23
- 24
- 25

Privileged and Confidential
Draft

BaseMap Legend

- Yolo County 2008 4:76
- Yolo County Boundary
- Boundary
- Major Road
- Road
- River
- Coastline



Coordinate System: NAD83, California State Plane
 Document: Marxan_D_1_SummedRuns
 Date: 11/04/2008

**Yolo County
Natural Heritage Program**



Uplands Strategy: Incorporation of Uplands within the Agric Matrix

- Approach
 - Identify larger units of grassland (>30 ac)
 - Incorporate vernal pools and alkali grasslands
 - Examine species occurrences, ownerships
 - Incorporate adjacent ag land for buffer or restoration opportunity

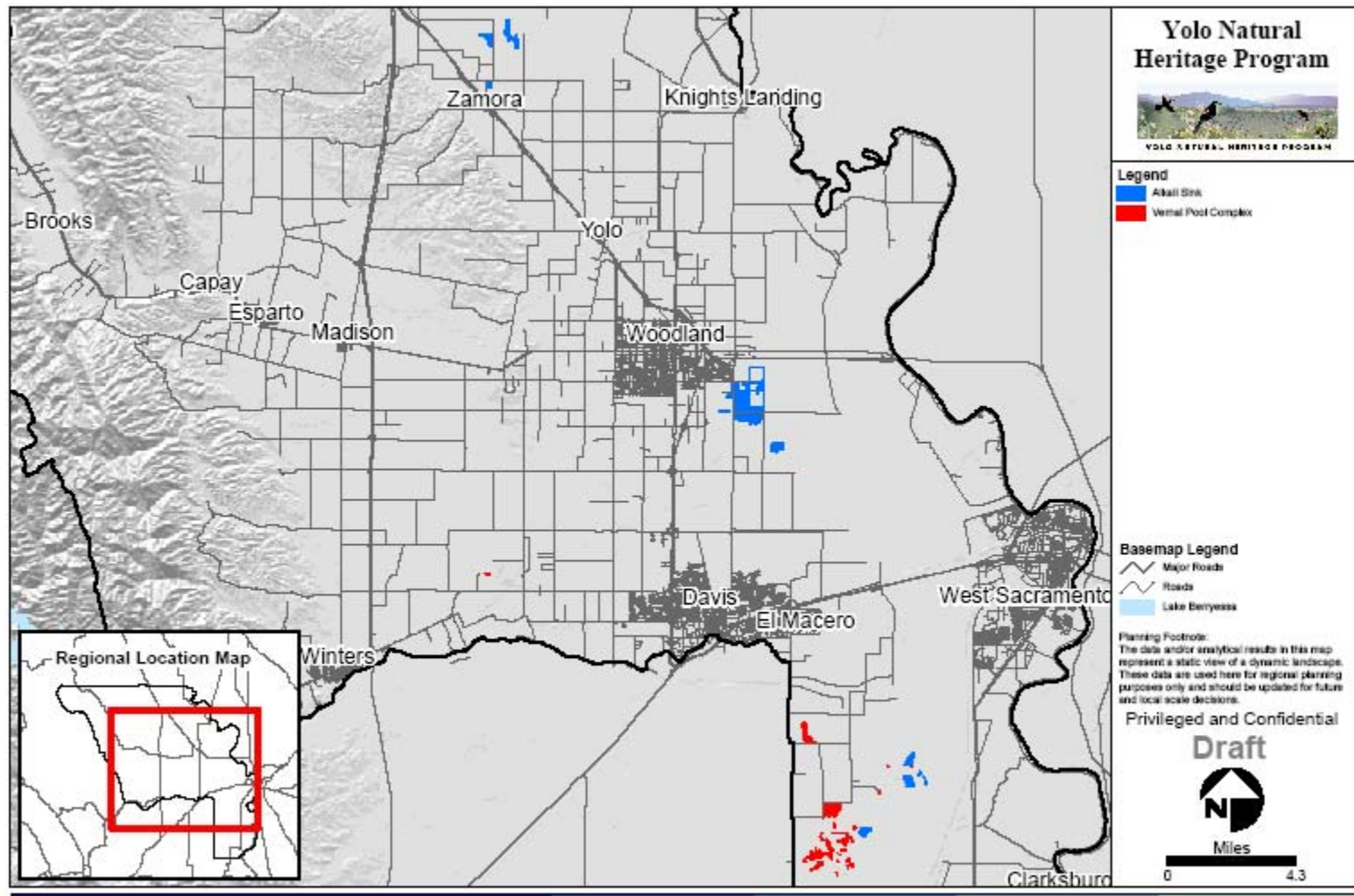


Figure 2-4. Distribution of Alkali Wetlands and Vernal Pools in the Yolo Natural Heritage Plan Area

Uplands Strategy:

Uplands within the Agric Matrix

- Outcome (draft)
 - Few upland areas present
 - Often associated with other protected lands (Yolo Bypass WA, Russell Ranch, Roosevelt Ranch)
 - Same conservation lands incorporated into all Alternatives

Uplands Strategy: Conservation Acreage in Draft Plan – Within 5 Mountain and Hills Planning Units

Habitat	Total area	Habitat Currently Protected	% Currently Protected	Additional Lands to be Protected	% remainder added to protection	Total area protected	Percent of Total Lands Protected
Annual Grassland	67,518	5,462	8%	24,574	40%	30,036	44%
Serpentine	253	162	64%	91	100%	253	100%
Fresh Emergent Wetland	337	43	13%	92	31%	135	40%
Open Water	848	312	37%	219	41%	531	63%
Valley Foothill Riparian	2,187	427	20%	956	54%	1,383	63%
Chamise	30,299	14,774	49%	11,931	77%	26,704	88%
Mixed Chaparral	14,558	11,179	77%	2,703	80%	13,882	95%
Blue Oak - Foothill Pine	43,662	7,010	16%	28,679	78%	35,689	82%
Blue Oak Woodland	33,766	7,752	23%	17,854	69%	25,606	76%
Closed-Cone Pine-Cypress	216	209	97%		80%	216	100%
Montane Hardwood	3,137	1,003	32%	1,707	80%	2,710	86%
Valley Oak Woodland	178	35	20%	108	76%	143	80%
TOTAL	219,895	48,831	22%	90,098	53%	138,929	63%

Initial Alternatives Evaluation: Attainment of species goals

- Initial Assumptions – *subject to verification/correction*
 - Goals met in Agric Landscape Unit
 - Existing riparian value maintained, not enhanced
- Results – *initial evaluation, for planning purposes*
 - % of total non-agricultural habitat goals attained by alternative:
 - Large Alternative: 81%
 - Medium Alternative: 67%
 - Small Alternative: 63%

Alternatives Evaluation:

Attainment of species goals - *draft*

- Key Results –
 - To meet goals, need to work from Large Alternative
 - Plants - nearly all goals are met
 - Goals currently un-met for several upland species - mainly grassland species: Kite, Golden Eagle, Badger
 - Options:
 - Reassess goals – are they realistic, necessary?
 - Substitute with agricultural habitat – does it overachieve?
 - Focus more on habitat quality (through management) than quantity
 - Add grassland acreage to strategy