

Yolo Natural Heritage Program:



Riparian Conservation Strategy Workshop #2

Paul Cylinder, Dan Airola, Maria Wong

December 14, 2009

Watercourse Classification and Extent

Channel Type	Miles	%
Major Streams	121	5
Large Sloughs	67	3
Tidal Influenced Sloughs	22	1
Large Channels	136	5
Small Foothill Streams	160	6
Small Valley Floor Streams and Channels	1,366	52
Small High Elevation Streams	730	28
Cache Creek Settling Basin Channels	20	1
Total	2,622	100

Woody Riparian Habitat Classification and Mapping Results

Vegetation Type	Acres	% Riparian Ac	% of Total Co Acres
Mixed Willow	1,871	16	0.30
Intermittently Flooded/Saturated Deciduous Shrubland	1,073	9	0.20
Mixed Fremont Cottonwood - Willow	1,193	10	0.20
White Alder-Willow	56	0	0.01
Fremont Cottonwood - Valley Oak	3,127	27	0.50
Valley Oak - Riparian	3,183	28	0.50
Coyote Brush	207	2	0.03
Giant Reed Series	102	1	0.02
Tamarisk	499	4	0.10
Blackberry	<u>227</u>	<u>2</u>	<u>0.03</u>
Total	11,537	100	1.80%

Maps of Watercourses and Riparian Vegetation

- Not easy to view at County-wide scale
- Will present examples in later discussion of priorities
- Will place maps on web site for easier viewing

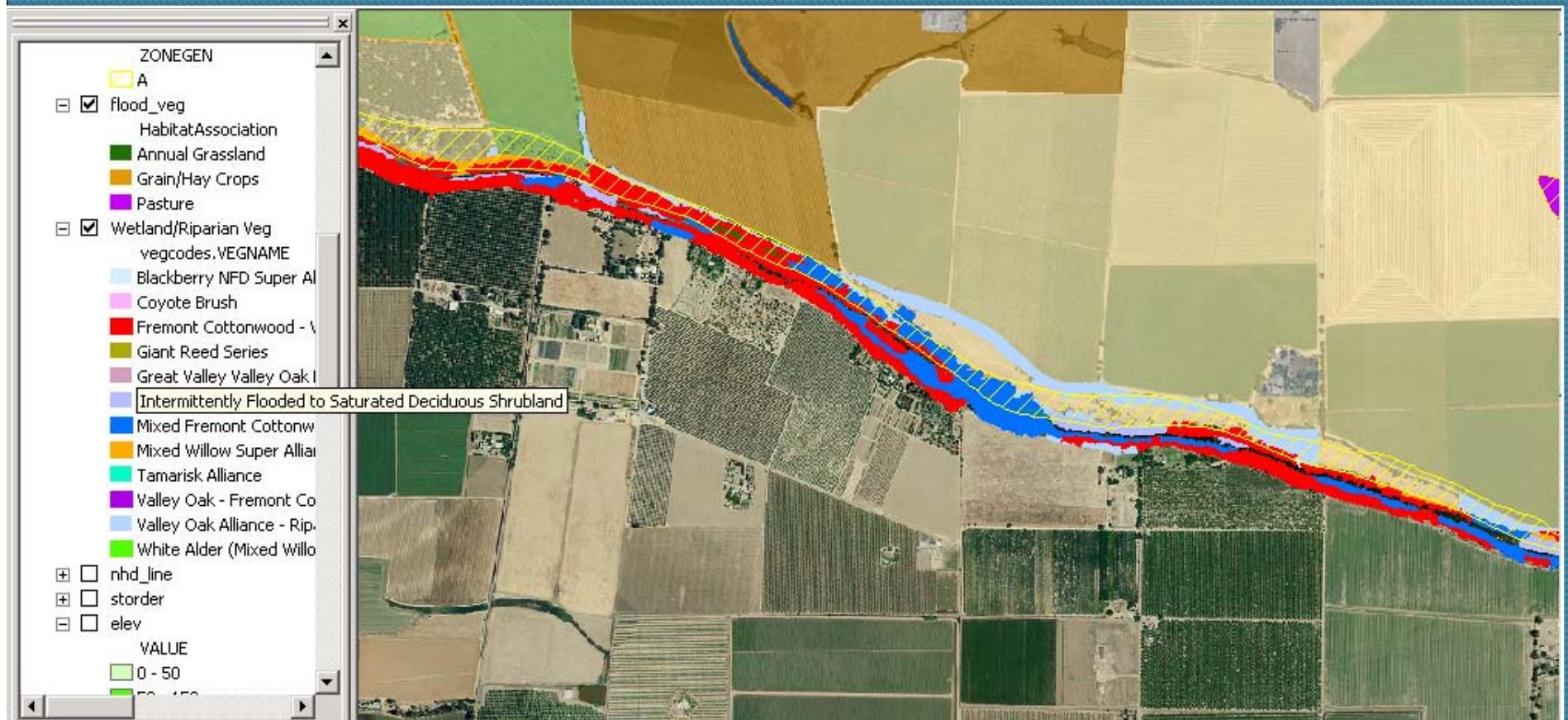
Definition: Riparian Area

- Needs/uses of definition in plan
- Input to definition (see handout materials – Item 3, Pages 7-8)

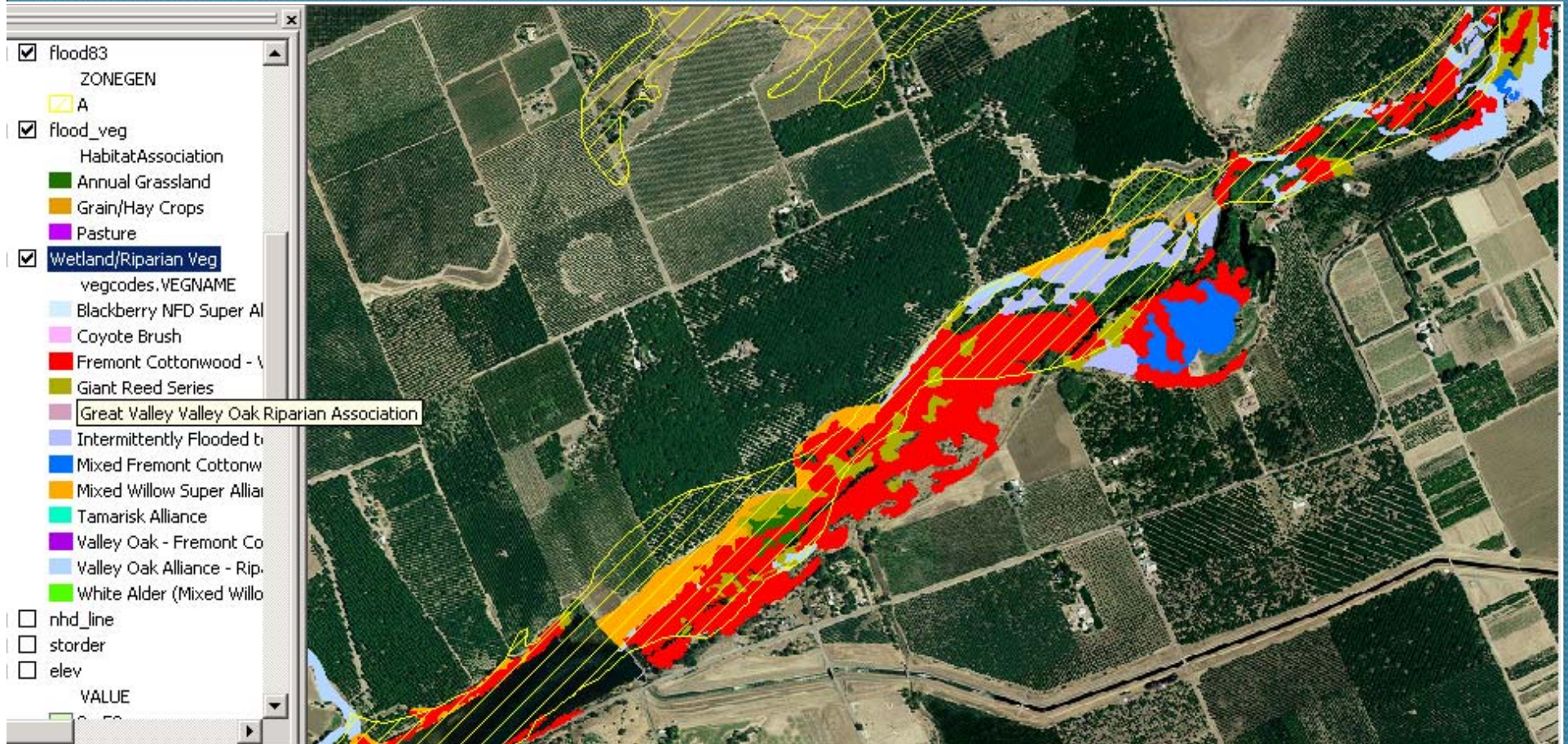
Priorities for Riparian Conservation Strategy

- Purpose
 - Mitigation to offset impacts
 - Conservation of biological functions
- Approaches
 - Protection of existing habitat
 - Enhancement of degraded habitat
 - Restoration of habitat at appropriate sites
- Priorities among and within these approaches

Riparian Protection: Example of limited restoration opportunity along Putah Creek



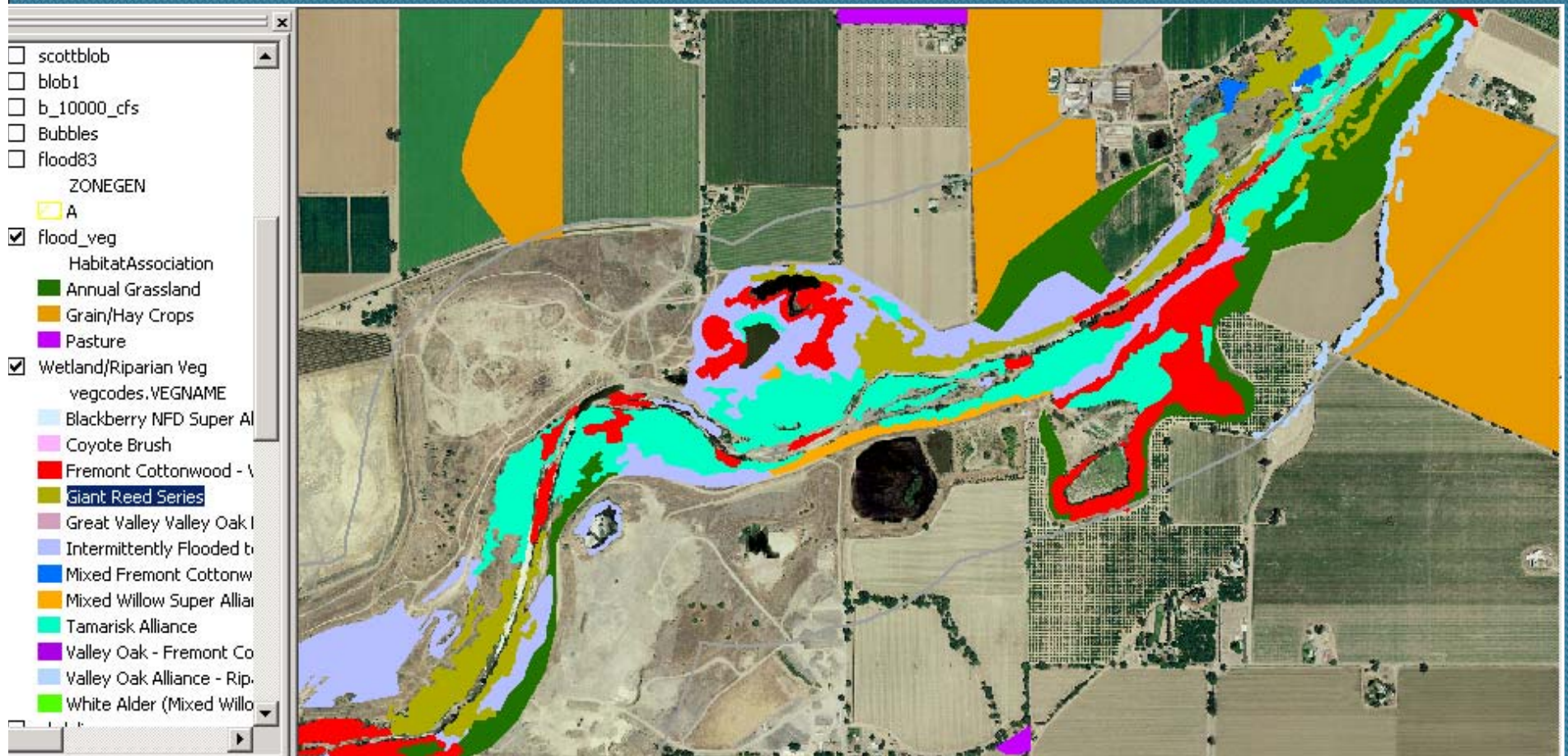
Riparian Protection: Cottonwood outside Putah Creek floodplain



Riparian Conservation Priorities: Protection

- Protect existing habitat areas and the supporting physical and ecological processes
- Priorities for selection
 - Key habitat characteristics (size, intactness, diversity, function, key veg types or species use)
 - Large preserves vs. broader distribution

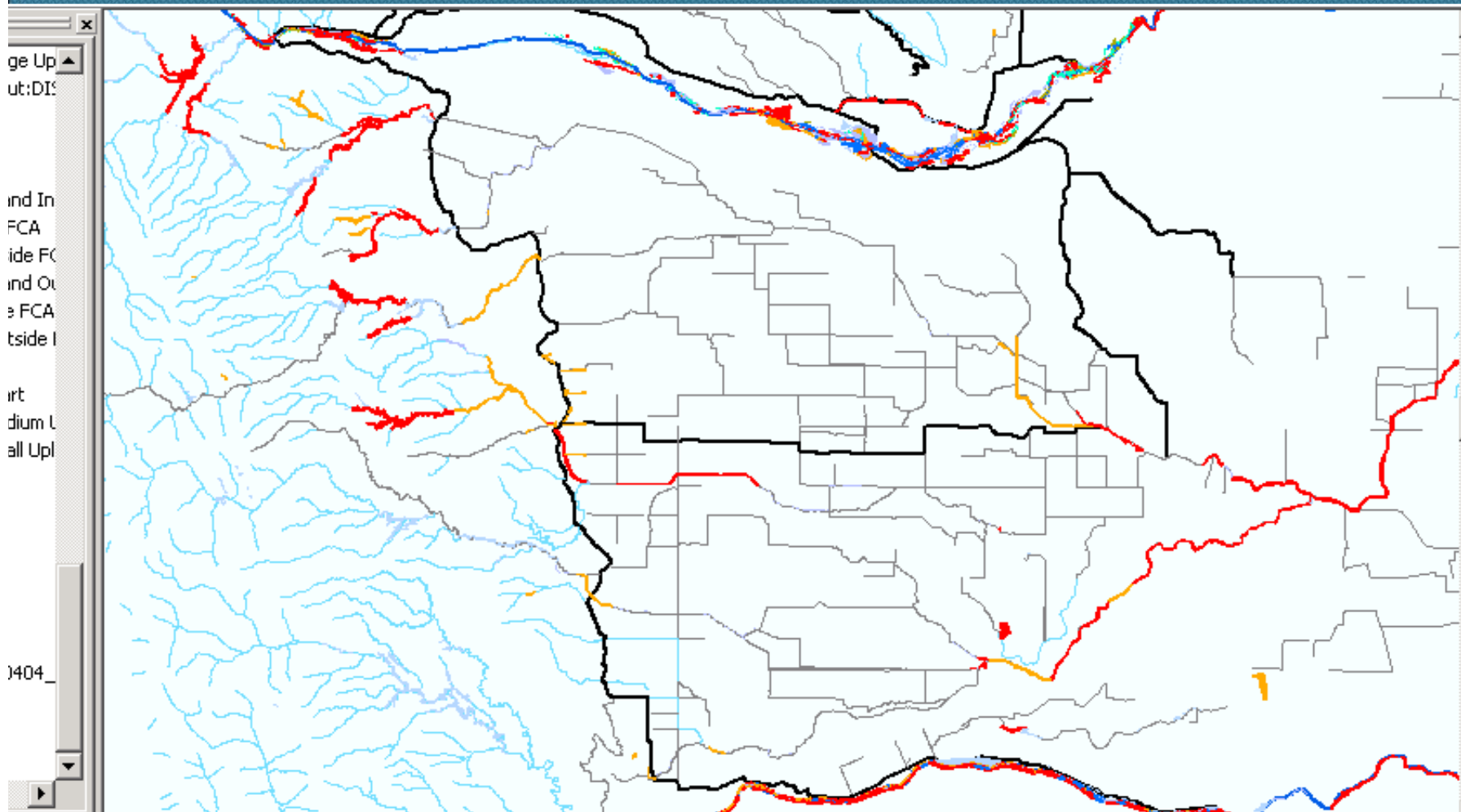
Riparian Enhancement: tamarisk and giant reed habitat in Cache Creek floodplain



Riparian Conservation Priorities: Enhancement

- Enhance existing habitat
 - Control exotic vegetation
 - Improve floodplain/hydrologic conditions
 - Reduce disturbance from onsite and adjacent uses

Riparian Restoration: Lowland ditches, sloughs and streams



Riparian Conservation Priorities: Restoration

- Restoration
 - Appropriate site conditions (hydrology, soils, etc.)
 - Key connections (continuous corridors)
 - Large habitat areas (expand widths)
 - Along sloughs and ditches
 - “Matrix” habitat
 - Where compatible with water supply, flood control

Riparian Conservation Priorities: Conservation

- Conservation – to contribute to recovery of species and maintain and enhance biodiversity
- Form of Conservation
 - Acquire and Protect
 - Enhance
 - Restore

Riparian Conservation Priorities: Mitigation

- Mitigation - for unavoidable losses only
- Mitigation guidelines
 - In kind for riparian impact?
 - In kind or “better” for riparian impacts?
 - Incorporate riparian component into mitigation for other habitat loss (agriculture)
 - Form of mitigation:
 - Acquire and protect
 - Enhance
 - Restore