

Yolo Natural Heritage Program:



Riparian Conservation Strategy Workshop - Introductory Materials

Paul Cylinder, Dan Airola, Maria Wong

October 26, 2006

Yolo Natural Heritage Program is an HCP/NCCCP

- Serves as joint federal ESA and state NCCPA compliance document
- More than a mitigation plan for threatened and endangered species (conserve species)
- Ecosystem focus for conservation planning (natural communities on which species depend)

Riparian Species Addressed ("Covered ") by the Plan

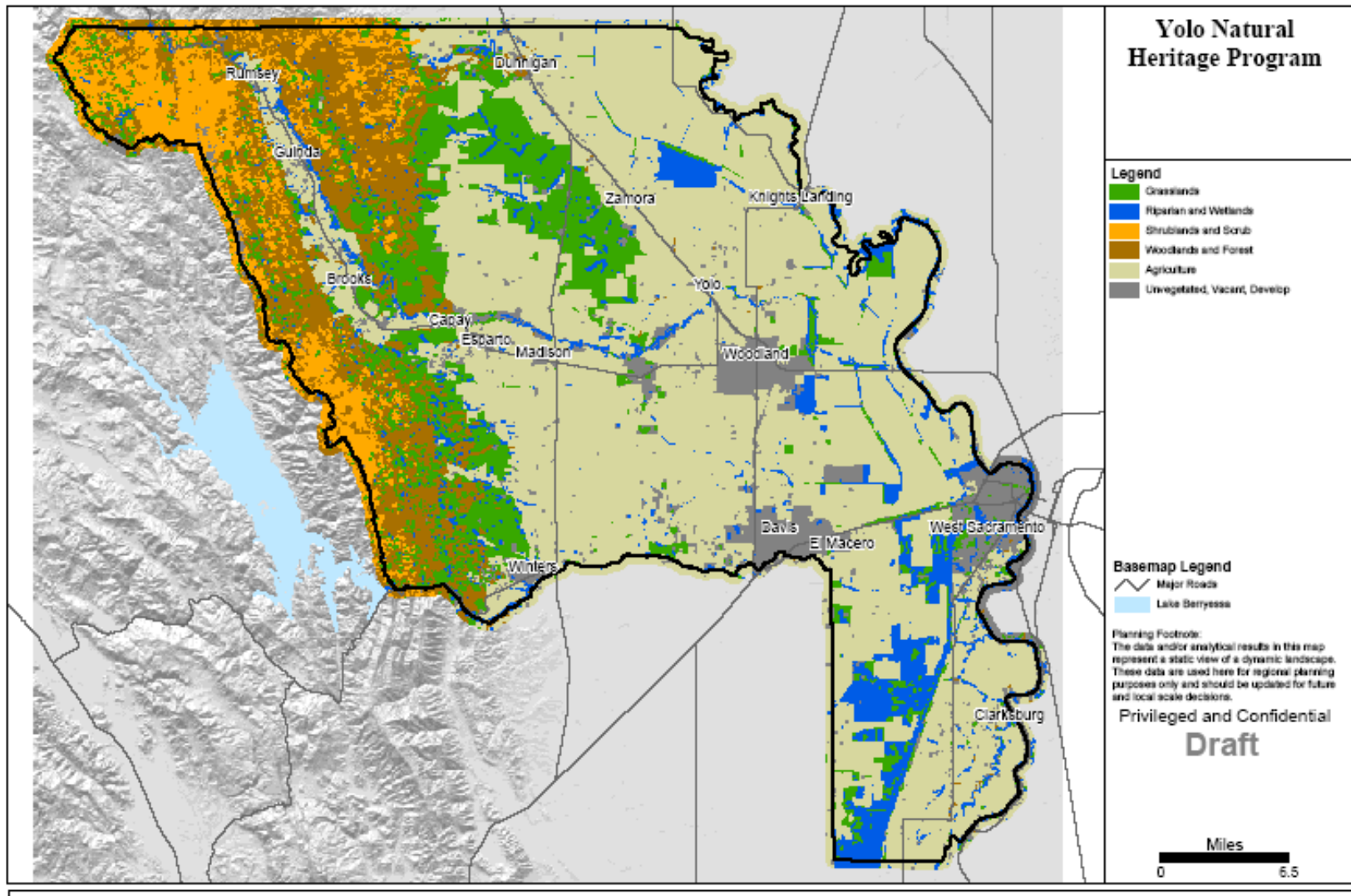
Examples:

- Fully Dependent Species
 - Rose mallow
 - Valley elderberry longhorn beetle
 - Foothill yellow-legged frog
 - Western yellow-billed cuckoo
 - Bank swallow
- Riparian serves a key need
 - Swainson's hawk, yellow-billed magpie (nesting)
 - Western red bat (roosting)

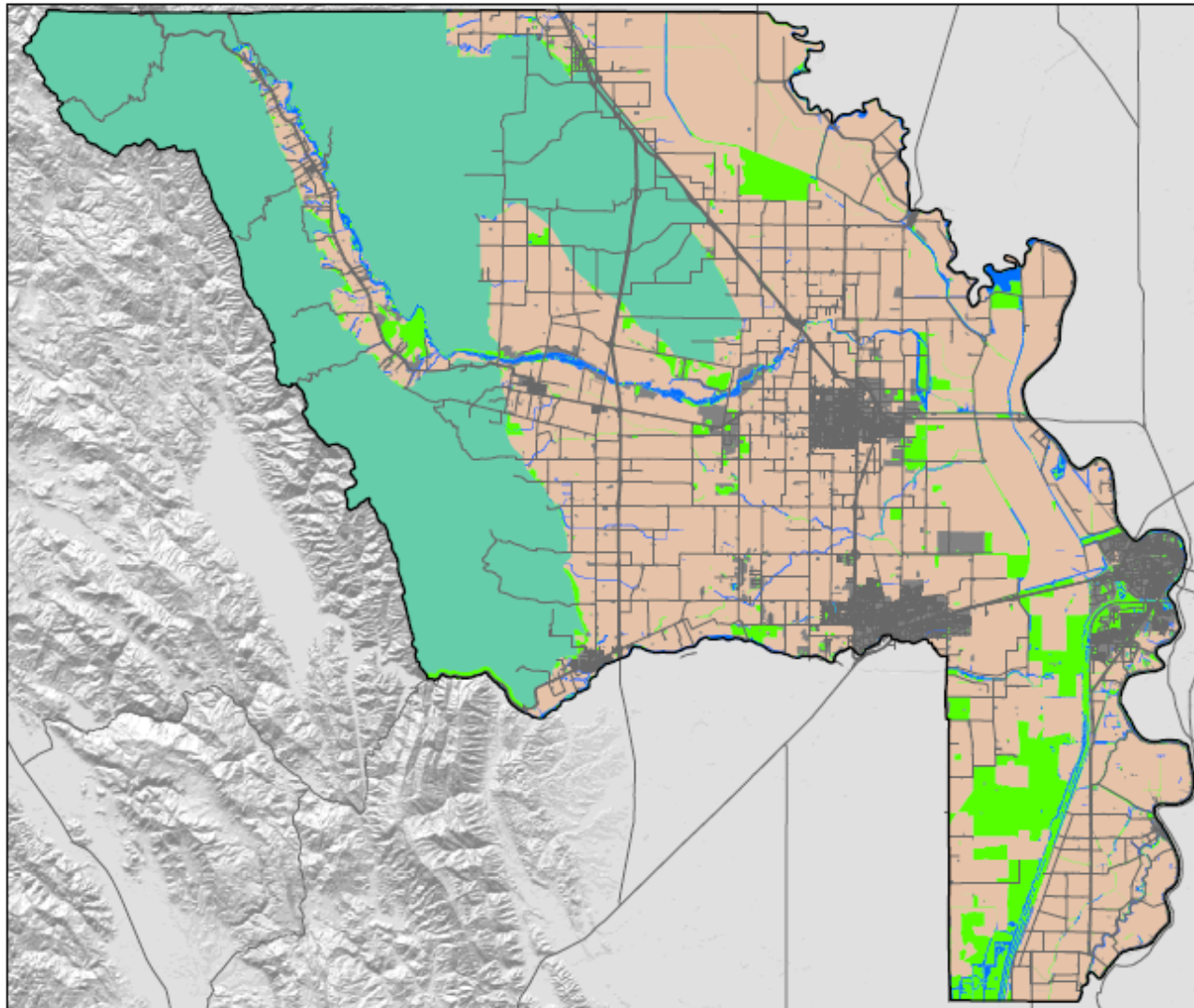
Approach to Developing the Conservation Strategy

- Identified four distinct “Landscape Units” as a basis for Planning:
 - Uplands (hills and mountain areas)
 - Valley Natural Communities (Non-riparian natural communities on valley floor)
 - Woody Riparian (upland and lowland)
 - Agricultural
 - (+ Urban)
- Designated 21 geographically distinct “Planning Units”, each containing lands with similar characteristics

Yolo NHP Natural Communities



Conservation Landscape Units



Yolo Natural Heritage Program



YOLO NATURAL HERITAGE PROGRAM

Landscape Units

Legend

- Agriculture
- Developed
- Riparian
- Upland
- Valley Natural Communities

Basemap Legend

- County Boundary
- Major Roads
- Roads

Planning Footnote:

The data and/or analytical results in this map represent a static view of a dynamic landscape. These data are used here for regional planning purposes only and should be updated for future and local scale decisions.

Privileged and Confidential
Draft

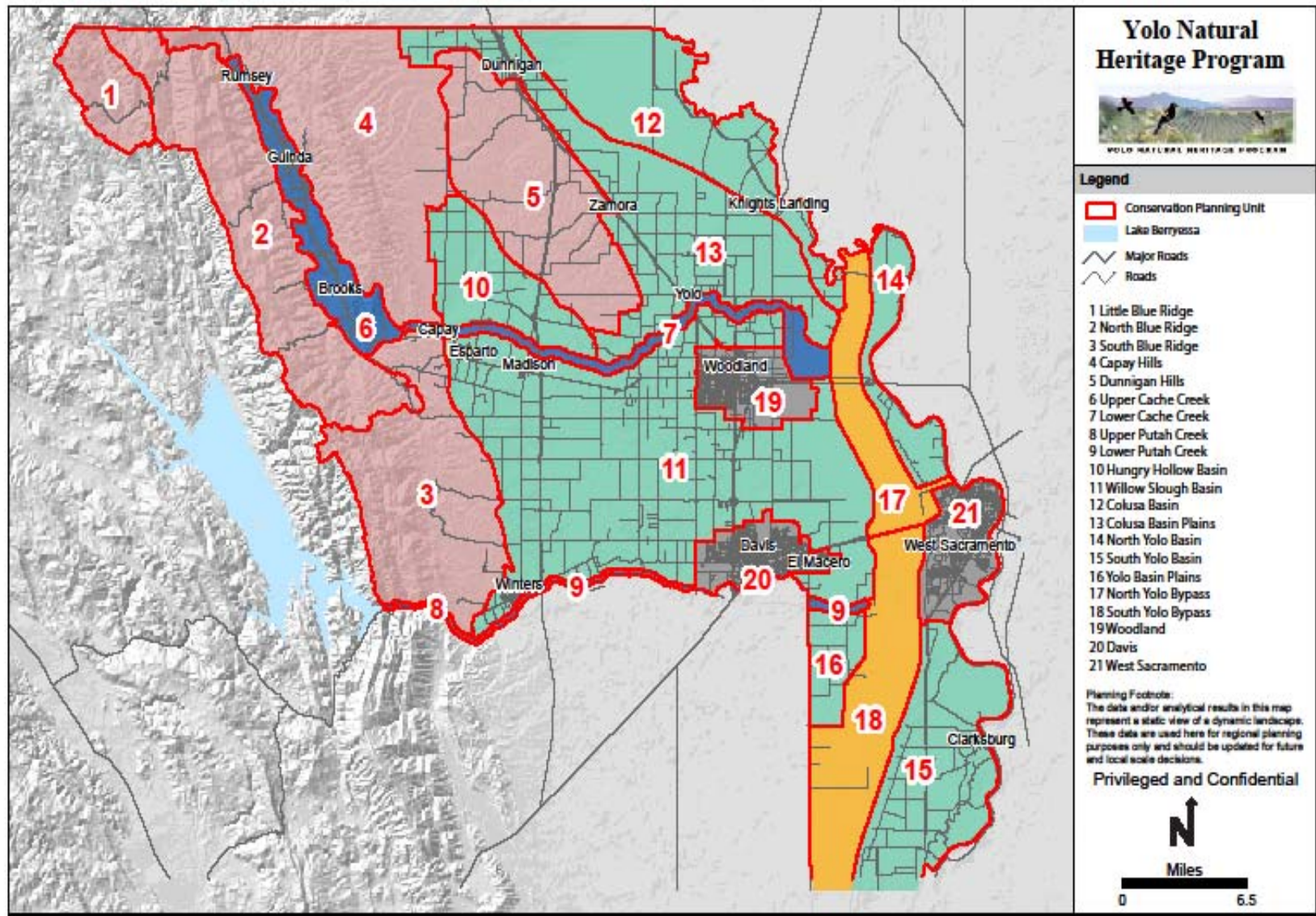


0 4.25 Miles

Figure

2

Conservation Planning Units



Watercourse Classification and Extent

Channel Type	Miles	%
Major Streams	121	5
Large Sloughs	67	3
Tidal Influenced Sloughs	22	1
Large Channels	136	5
Small Foothill Streams	160	6
Small Valley Floor Streams and Channels	1,366	52
Small High Elevation Streams	730	28
Cache Creek Settling Basin Channels	20	1
Total	2,622	100

Riparian Habitat Classification

- Natural Community: Riparian and Wetlands
- Habitat: Valley Foothill Riparian
- Vegetation type: 10 types recognized

Woody Riparian Habitat Classification and Mapping Results

Vegetation Type	Acres	% Riparian Ac	% of Total Co Acres
Mixed Willow	1,871	16	0.30
Intermittently Flooded/Saturated Deciduous Shrubland	1,073	9	0.20
Mixed Fremont Cottonwood - Willow	1,193	10	0.20
White Alder-Willow	56	0	0.01
Fremont Cottonwood - Valley Oak	3,127	27	0.50
Valley Oak - Riparian	3,183	28	0.50
Coyote Brush	207	2	0.03
Giant Reed Series	102	1	0.02
Tamarisk	499	4	0.10
Blackberry	<u>227</u>	<u>2</u>	<u>0.03</u>
Total	11,537	100	1.80%

Riparian Conservation Strategy

- Framework for the Riparian Strategy
 - In development
 - Incorporate and support existing effort
- Balanced program: protect, enhance, restore, mitigate
- Wetlands – main focus to maintain existing values
- Woody Riparian
 - Protect key areas
 - Enhance by controlling exotic vegetation, interplanting
 - Restore
 - Emphasize key connections
 - Sloughs and ditches, in areas where opportunities maximized
 - Mitigate – unavoidable losses